

The Value of Decentralized Non-Potable Water Systems for the San Diego Region

Placeholder for Speaker's name
Title

Speaker's name
title

Key Findings From the Advancing Safe, Healthy
Non-potable Water Use for the San Diego Region Project
2019



UC San Diego



Placeholder for
other logo

Water in Our Daily Life



Water Resilience and Climate Adaptation

- Diversification
- Decentralization



Increasing San Diego County's Water Supply Reliability through Supply Diversification



* Based on Interim Demand Forecast Reset and includes verifiable and additional planned local supply projects from 2015 UWMP

(TAF=Thousand Acre-Feet)

Increasing Local Resilience

Local Food Movement

Energy & Microgrids

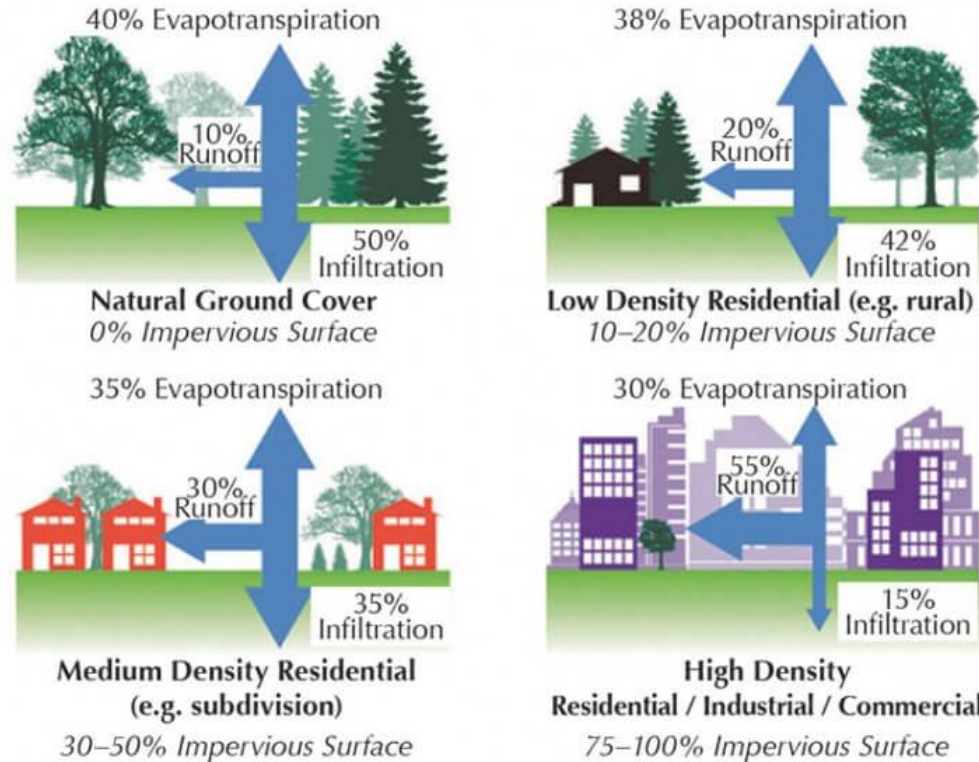


Localizing Our Water



The Problem is the Solution

EFFECTS OF IMPERVIOUSNESS ON RUNOFF AND INFILTRATION



Decentralized Non-Potable Water Systems

- Greywater
- Rainwater
- Stormwater
- A/C condensate



The Time is Now

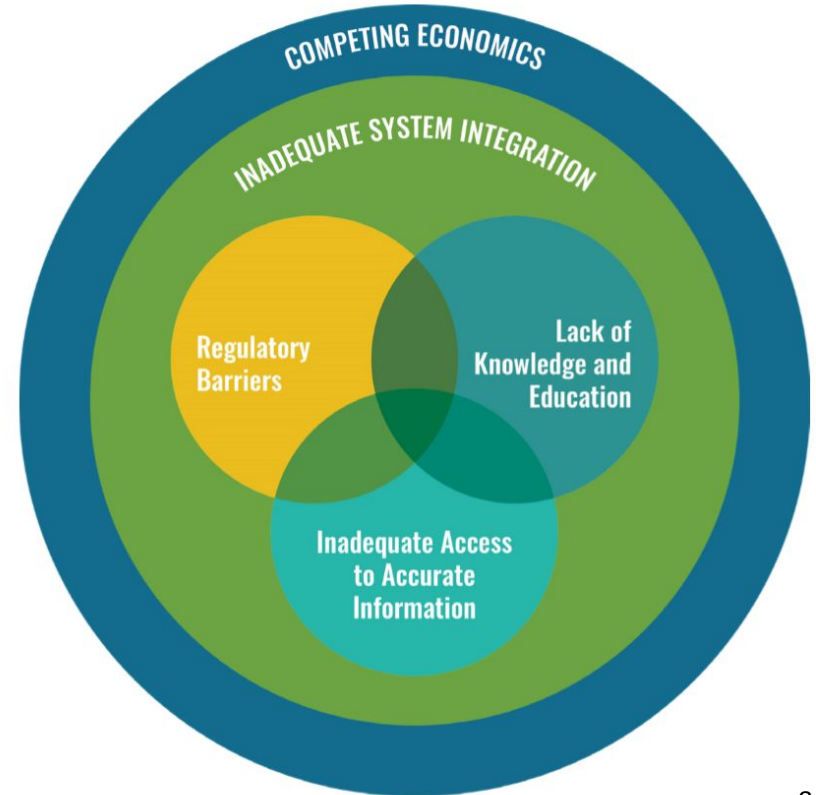
- Upcoming State requirements
- Climate change
- Community well-being
- How?
 - Be proactive
 - Start collaboration between agencies and organizations
 - Create multiple benefits



Why aren't we doing it?

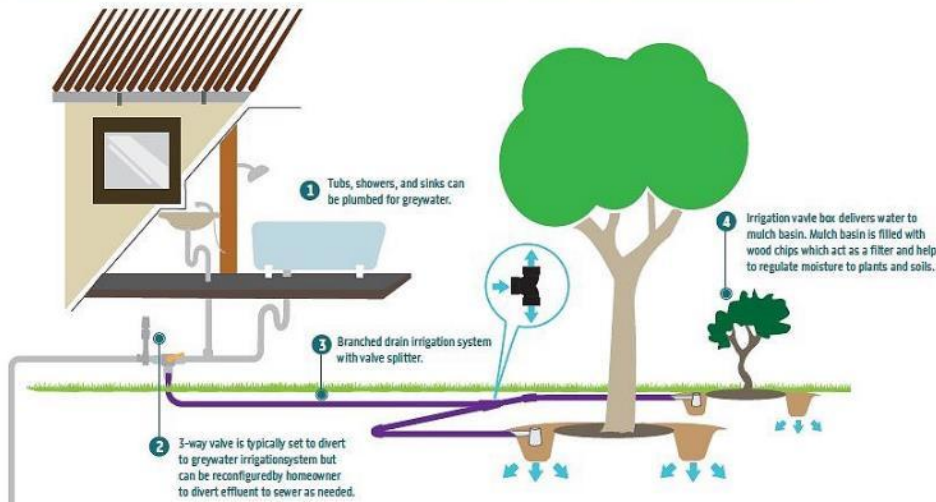
Top barriers across all levels:

- Lack of education
- Lack of regulatory clarity



Greywater Reuse

SHOWER/SINK TO LANDSCAPE GREYWATER RE-USE



- California Plumbing Code
- Thousands of gallons of potential water savings for residential buildings
 - Irrigation
- Potential water savings in commercial buildings
 - Indoor use

Rainwater Capture



Capture from rooftops

- Thousands of gallons of potential water savings for residential buildings
 - Irrigation
- Hundreds of thousands of gallons of potential savings from commercial
 - Indoor use

Stormwater Use & Reuse

Grey Infrastructure



- No infiltration in natural environment.
- Conventional piped drainage and water treatment systems.

Flow-Thru BMPs



- Vegetated swales, media filters, sand filters, dry extended detention basin, etc.

Biofiltration BMPs



- Shallow basins filled with treatment media and drainage rock that treat stormwater runoff by capturing and detaining inflows prior to controlled release

Retention BMPs



- capture, maximize storage and infiltration of stormwater runoff to prevent surface runoff

Stormwater Reuse

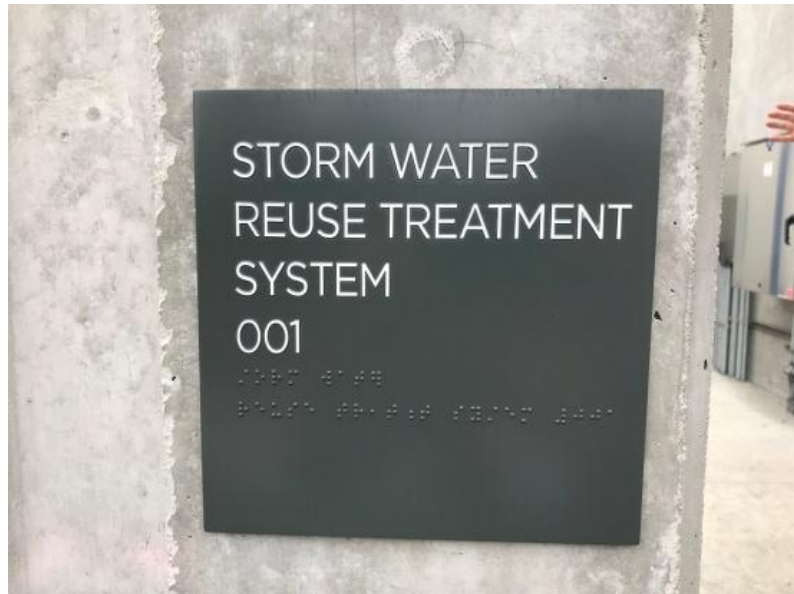


- Capture of stormwater for treatment and non-potable water reuse.

Water Supply Augmentation

San Diego County Regional Airport Authority

Stormwater Reuse and A/C Condensate Capture



A/C Condensate Capture

UCSD BioMed II

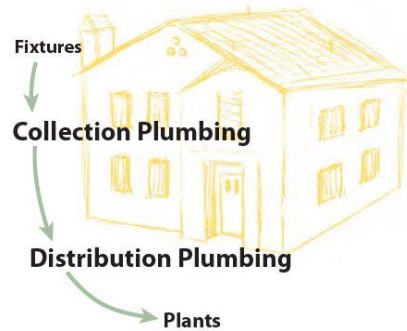
- Building Surface
 - 200,000 ft²
- Estimated Capture:
 - 3,000 gallons/day
 - 3.4 acre-feet/year



Multiple Benefits

- Supports a healthy tree canopy
- Benefits ecosystems
- Restores water cycle
- Creates local sources
- Supports climate adaptation

Narrow Approach



System Approach



Santa Barbara County Greywater Handbook

Transformative Outcomes

Tucson, AZ

1994



2006



Water Resilient Landscapes

Groundwork Home Makeover Project



Alleviating Localized Flooding



□ After 2 inches of rain fell in less than an hour on high clay soils.

After 4 inches of surface mulch and plant material added. All rain now infiltrates in less than an hour



Why Equity is Important?

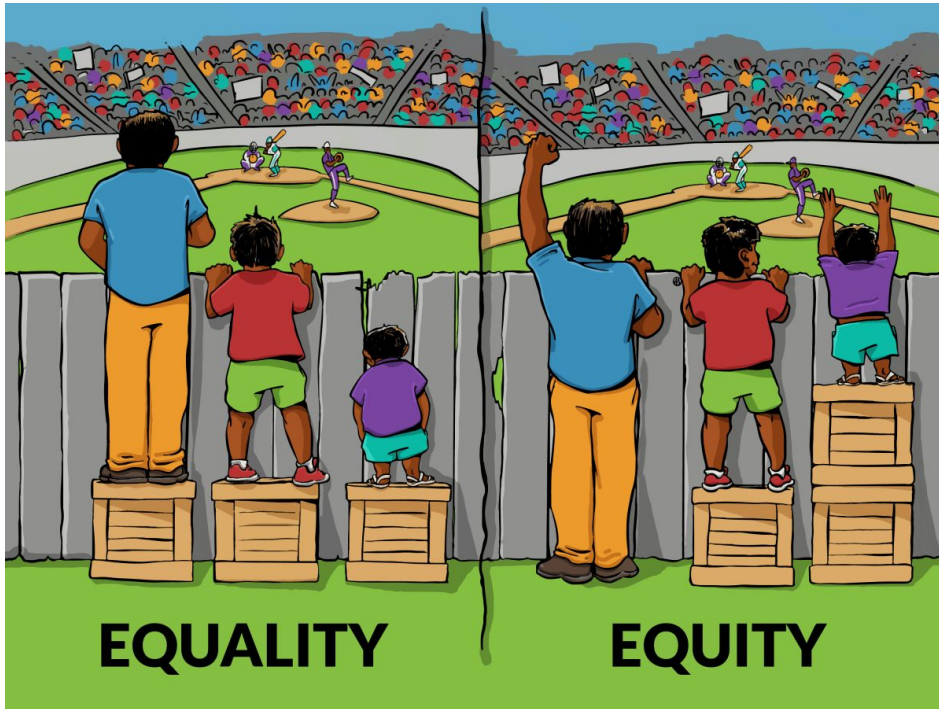


AN EQUITABLE WATER FUTURE A National Briefing Paper

- State commitment to water as a Human Right
- Create cumulative positive impact by ensuring material/tools/resources are available to more people



Designing Water Solutions with an Equity Approach



Direct contract rebates vs
cost reimbursement

Enhanced community
engagement and
representation

Health & equity elements in
water-related policies and
programs

Project Overview

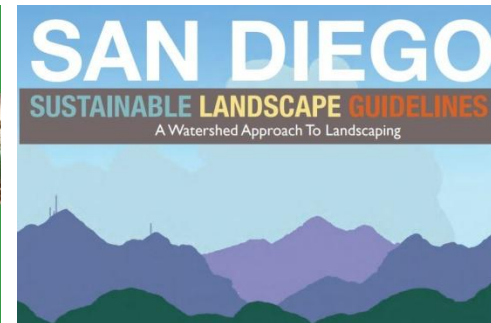
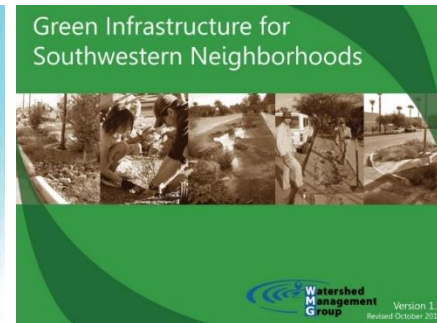
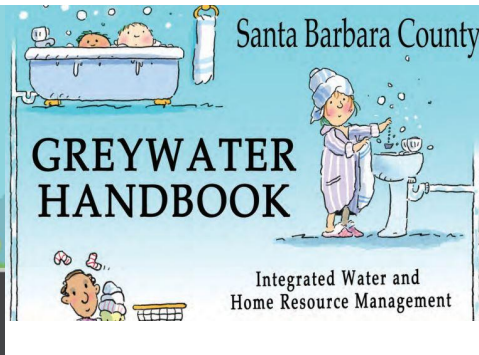
Advancing Safe, Healthy Non-potable Water Use for the San Diego Region

- Core Values
- Barriers
- Recommendations
- Public Health Advisory Committee

“To forge a new paradigm for San Diego – one in which all local water is valued and 80% of water is locally sourced by 2070.”

Safe and Healthy Best Practices for Decentralized Non-Potable Water Systems

- Recommendations based on a broad set of best practices
- Ensure health and equity
- Develop consistent best practices throughout the region



How Can You Be a Water Champion?

Become an advocate for DNPW systems

- Educate the general public
- Have your staff get educated and trained

Ensure all public dollars incorporate multiple benefits and equity elements

Join the National Blue Ribbon Commission for Onsite Non-potable Water Systems

Support a vision of localizing our water

- Participate in interjurisdictional meetings
- Take part in the regional Localizing SD Water conference

How Can You Be a Water Champion?

Asses the code framework for decentralized non-potable water systems

Ensure all codes and permitting are updated with best practices

- Building codes
- Engineering standards
- Greywater systems
- Etc.

Support rebates and funds for decentralized non-potable water systems

How Can You Be a Water Champion?

Consult resources

- Typical BMP Landscape Solutions by San Diego Housing Commission
- San Diego Sustainable Landscape Guidelines
- Discovery Document and Blueprint for Advancing Decentralized Non-Potable Water Use in the San Diego Region

Placeholder for contact information

Discovery Document

<http://bit.ly/DiscoveryDocumentSD2019>

Blueprint

<http://bit.ly/BlueprintSD2019>



THANK YOU!